

Albert Primary School

YSGOL GYNRADD ALBERT

An English Medium Primary School in the Vale of Glamorgan

January 2021

Annual Report to Parents For the Academic Year 2019 to 2020

Inside this issue:

Chair of Governor's Report	1
School Improvement Plan	4
Pupil Achievement	2
School Environment	4
Governing Body 2019 - 2020	5
Finance	9

Chair of Governor's Report

Dear Parents/Carers,

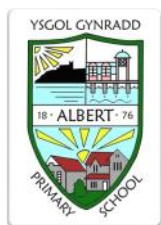
On behalf of the Governing Body of Albert Primary School, we would like to present the Annual Report to Parents for the academic year 2019/2020.

This academic year presented significant challenges to the whole school community. The Governing Body is extremely proud of the way the senior leadership team, school staff and children responded to these exceptional circumstances. The Governing Body would like to pass on their appreciation to all staff for continuing to provide stimulating learning activities for all pupils virtually and in person and their thanks to the pupils and their parents/carers for their resilience and cooperation. The well-being of pupils and staff is a very important concern for the Governing Body and never more so than in these unprecedented times. The Governing Body is grateful that the culture and ethos of Albert Primary School, provides a supportive and caring environment, which prioritises the safety, welfare and happiness of children and those that support them.

There is a saying that 'smooth seas do not make skilful sailors'; the Governing Body is sure that the 'stormy seas' of this academic year, will have provided staff and pupils with further opportunities to become solution-focussed, creative and inventive teachers and learners and we are delighted by what they have achieved in these circumstances. The Governing Body, with the support of the Head Teacher, his senior leadership team and staff, will continue to ensure that Albert Primary School provides the best possible opportunities for all learners to be the best that they can be in a safe and secure learning environment. We look forward to the time when we can return to 'normal' and enjoy the freedom of every day, incidental contact but until then take care and keep safe.

Mrs J Hillier & Mrs J Elias

Chair of Governors & Vice Chair of Governors



Headteacher's Comments

We are exceptionally proud of the enthusiasm that the children have shown for their approach to school and their learning during these unprecedented times. We strive to provide a nurturing and purposeful environment where every learner can flourish and develop as an individual.

I would like to record a very special thanks to the teaching and support staff who embraced and excelled in the very real challenge of providing meaningful and encouraging teaching opportunities during these extraordinary times. I would also like to thank the Governors, parents and carers for their encouragement and support during this year.

Andrew Gilbert [Headteacher]



IMPORTANT INFORMATION

Subject to legislative changes the school has modified our Annual Report to Parents this year as a result of the Coronavirus pandemic.

We have aimed to provide a relevant and useful report to parents and carers.

We recognise that some information that would ordinarily be included in a report may not be available.

The Welsh Government are suspending the School Performance and Absence Targets (Wales) Regulations 2011. This means that schools will not be required to report on targets in relation to performance or absence for the 2019/20 academic year.





School Improvement Plan

Governors are responsible for drawing up (in conjunction with staff) the School Improvement Plan. The plan identifies the direction the school will take over the next academic year, in delivering the curriculum and raising standards. The plan is regularly monitored and revised to take account of progress made and any changes to curriculum and government requirements.

The School Improvement Plan for the 2020/21 academic year is being considered for approval by Governors. Targets are regularly re-viewed by the Governing Body.

The main areas of development during the academic year 2019/20 were to action the following:

- Continue to develop a curriculum in line with Welsh Government proposals
- To further refine the consistency of pedagogy across the school
- Continue to improve outcomes of vulnerable learners
- Literacy, Numeracy, Digital Competence and Bilingualism
- Review of development of the ALN/ALP

Pupil Achievements / School Sports



During this last year, prior to lockdown, our children have achieved academic and sporting success and we congratulate them all.

Last year the school were again very successful in their sporting achievements. Again we have to thank the staff and parents who gave up their time to provide the children with these extra curricular activities.

Special Educational Needs and Inclusion



This is a regular item for every Governing Body Meeting in order to keep Governors fully informed of the school situation and developments taking place both nationally and within the Local Education Authority. The update is either from the Additional Learning Needs Co-ordinator or within the Headteacher's Report.

One member of the Governing Body, **Mrs J Elias**, is responsible for linking with the school's **Additional Learning Needs Co-ordinator, Mrs L John**.

The children identified may be given additional support in the classroom and withdrawn if necessary.

The school is fully committed to the principles of social and educational inclusion laid down in Albert Primary's Equalities Policy. Inclusion is about equity and including everyone in the curriculum, showing recognition and respect for culture, language and personal identity of all pupils. Methods of teaching and learning will reflect inclusive principles to help every pupil develop the knowledge, understanding and skills needed to participate in society.

If you have a concern about your child's learning or development you should initially speak to their class teacher. The teacher may then suggest a further meeting with the ALNCo should it be deemed necessary. This may lead to additional support or a teaching intervention.

The school uses IDL Dyslexia Intervention. IDL uses sight, sound, touch, and voice to improve reading and spelling. Links are made between the visual, auditory and tactile pathways.

We have also introduced Trauma Informed Schools UK. A trauma informed school is one that is able to support children and teenagers who suffer with trauma or mental health problems and whose troubled behaviour acts as a barrier to learning. It provides essential elements which ensure an accurate, differentiated approach to a child's individual needs. www.traumainformedschools.co.uk/what-is-a-trauma-informed-school

You can find out more information on all our school interventions via our website www.albertprimary.co.uk.



Equal Opportunities

In accordance with the school's Equal Opportunities Policy, all children must be given full access to the National Curriculum. Staff endeavour to help all children to reach their full potential. The Governing Body's Strategic Equality Plan builds upon the school's previous Disability Policy, Race Equality Scheme and Equalities Policy. This policy belongs to everyone and is relevant to all pupils, staff, parents, carers and local community. A full copy is available on the school's website or on request.

The School Environment

SECURITY

Governors would like to thank all parents who assist us in protecting our school property.

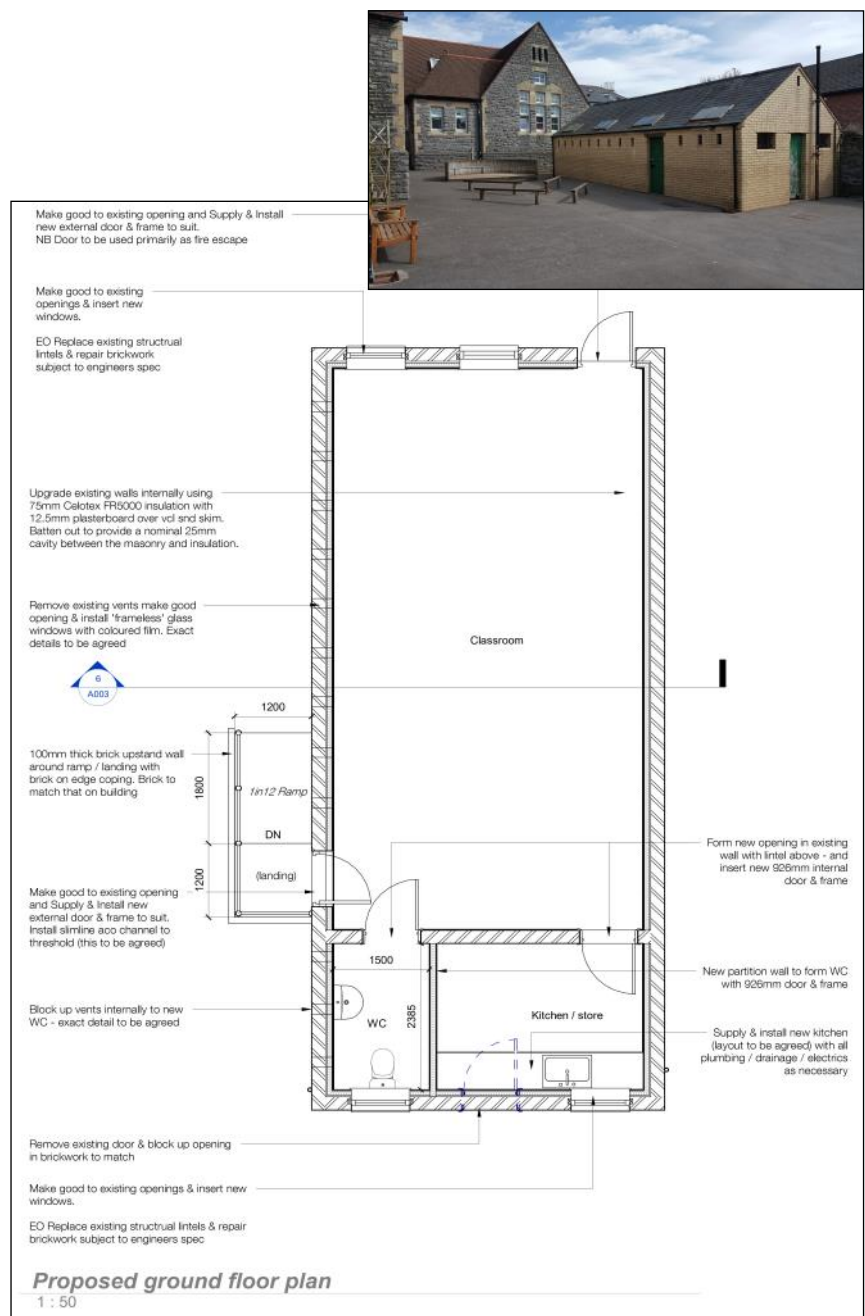
Governors continue to take measures to prevent vandalism and work closely with the caretaker and Local Authority Officers.

SCHOOL TOILETS

The school provides fully functional separate toilet/ suites for both girls and boys. Toilets are cleaned daily and any issues arising from use is actioned as a priority.

BUILDINGS :

The school made attempts to continue with its programme of modernisation and refurbishment throughout the year. The school was awarded funding for the refurbishment of a external disused toilet block in the main yard. Below are the proposed plans for the new class/community room, kitchenette and toilet. This work is scheduled to commence in Spring Term 2021.



Parental Support

More and more families are becoming involved in the life of the school. The school is very grateful for the continued support of the parents and friends of the school, who assist with a variety of activities which benefit the learning and ethos of continued development purported by the school. If you are available to volunteer in the future please contact the school.



People and Roles : Governors

Prospectus :

The School Prospectus is updated annually to include any changes required by the Welsh Government or other related bodies. A copy of the prospectus is issued to parents whose children are starting school for the first time, or transferring from another school. A revised copy, with our new staffing details, can be found on our school website at www.albertprimary.co.uk. Paper copies can be requested from school.

Curriculum :

Each Governor sits on the Provision Committee. It provides the Governing Body with a wider view of the curriculum and the effective teaching and learning at Albert Primary.

Policy reviews

During the year governors have approved a number of policy updates. These include the school's Safeguarding Policy. [Available on the website]

Finance Committee :

Restrictions in school budgets have been well publicised. Careful prioritisation, effective management and close scrutiny have ensured we have remained with an appropriate allocation. Without question, the major reason behind this is the close working relationship that exists between the Headteacher and the Leadership and Management Committee.

The latest financial statement for the school year **April 2019 to March 2020** can be found in this publication.

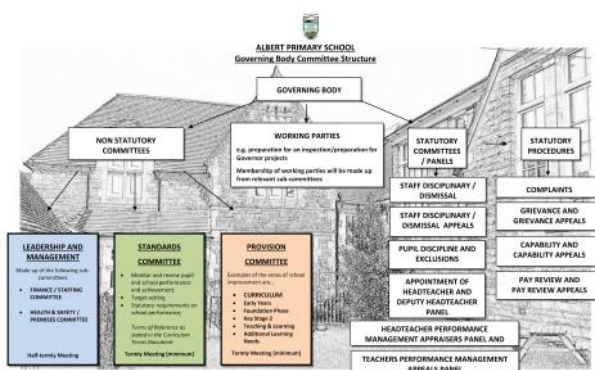


The Governing Body 2019-2020

We have a high level of expertise within the staff & governors and we are committed to continued professional development. The governors ensure that the focus for the school is to raise standards of teaching, learning and care of the pupils. Governors are involved with the analysis of school data and setting the School Improvement Plan.

Governors regularly review school policies to ensure they are up to date and valid. Our key policies can be found on our website. Governors also receive regular training via the support unit of the Local Authority, including data and safeguarding.

The Governors restructured their main committees last year. The effective working of the Governing Body has been recognised by the school's Challenge Advisor.



Name of Governor	Governor Type	Start Date	Term Expires
Ms Jendy Hillier <i>Chair</i>	Community	01-Sep-15	01-Sep-19
Ms Jacquelyn Elias <i>Vice Chair</i>	Community	01-Sep-18	01-Sep-22
Mr Andrew Gilbert	Head Teacher	—	—
Ms Liz Fahy	MAR	19-May-17	19-May-21
Mrs Hilary Southam <i>Safeguarding</i>	LEA	20-Mar-17	20-Mar-21
Mrs Lyndsey Lewis	LEA	02-Jul-18	02-Jul-22
Mrs Lowri Williams	LEA	02-Jul -18	02-Jul-22
Ms Laura Morse	Teaching	26-Jun-16	25-Jun-20
Mrs Sam Osborne	Teaching	12-Sep-17	12-Sep-21
Ms Kim Rix	Non-teaching	26-Jun-16	25-Jun-20
Ms Katherine Shelton	Parent	30-Sep-15	30-Sep-19
Mrs Christina Fernando	Parent	26-Sep-17	26-Sep-21
Ms Allison Dutoit	Parent	26-Sep-17	26-Sep-21
Mr Huw Williams	Parent	10-Oct-16	10-Oct-20
Mr Lee Jones	Community	26-Sep-19	26-Sep-23
Ms Louise Sommerin	Community	06-Nov-17	06-Nov-21
Vacancy	Community		
Vacancy	Parent		





Curriculum

The Curriculum for Wales 2022 seeks to allow for a broadening of learning, supporting settings and schools to be more flexible in their approaches, and them to be innovative and creative.

At the heart of this change are the four purposes of the curriculum, setting out the aspirations for all children and young people by the age of 16, enabling them to be successful learners, who play an active part in their community and wider society, and who are prepared to thrive in an increasingly complex world.

The four purposes of the curriculum are to develop children and young people as:

- ambitious, capable learners, ready to learn throughout their lives
- enterprising, creative contributors, ready to play a full part in life and work
- ethical, informed citizens of Wales and the world
- healthy, confident individuals, ready to lead fulfilling lives as valued members of society.

Curriculum for Wales 2022 has also been developed to reflect the strengths that the Foundation Phase has brought to education in Wales. The Foundation Phase ethos, principles and pedagogy will continue to be central to the delivery of early years education and have been incorporated across Curriculum for Wales 2022 to ensure it is appropriate and accessible for all practitioners and learners.

Curriculum for Wales 2022 organises learning around six areas of learning and experience which are:

- **Expressive Arts**
- **Health and Well-being**
- **Humanities**
- **Languages, Literacy and Communication**
- **Mathematics and Numeracy**
- **Science and Technology.**



Each of the areas of learning and experience has been designed to support learners to realise the four purposes of the curriculum, and they encompass existing subjects and disciplines. The areas of learning and experience are designed to operate together as part of a holistic curriculum.

Welsh

Albert Primary School is an English Medium School; Welsh is taught as a second language to Foundation Phase and Junior classes along the guidelines set by the National Curriculum document for Welsh. Every effort is made to ensure that all important signs in the school are bilingual.

At Albert Primary School we aim to create a strong Welsh ethos. We hope to provide our pupils with knowledge of Wales and its rich culture. Welsh is given a prominent and visual role throughout the school with teachers and children working towards the natural development of Welsh as a second language. Each year we celebrate St David's Day with great style, providing competitions and concerts for parents of children in the Foundation Phase. Children participate in an Eisteddfod, culminating in the ancient churning of the Bard ceremony.



Partnerships, Parents and Community Links

The school has an extensive partnership both within and beyond the school community. These links are vital in enriching and broadening the curriculum. The school continues to work closely with our feeder comprehensive schools, Initial Teacher Training and Learning Support Training Colleges. A community-focussed school is one that provides a range of services and activities to help meet the needs of its pupils, their families and the wider community.

We also run workshops and Families Learning Partner class events to enable parents to support their children's learning.

The school has an active and supportive Parent & Teachers Association (SOAP) who have again been very busy this year! We have enjoyed some fantastic events and the PTA have been raising money and have purchased many items for the school. The Christmas and Summer fairs were both highly successful and enjoyable events which raised much needed funds for the school. The governors would like to thank all of the members of the PTA, parents and friends of the school for supporting these events.



The school has a well developed link with the Police who visit regularly to deliver lessons to the children on a range of agreed topics including internet safety, smoking, substance misuse and keeping safe. They have also delivered e-safety training to parents. We have also strengthened our links with local PCSOs this year who have supported the school in many ways including problems with parking outside the school. We also have good links with the Fire Service.



SCHOOL HOLIDAY DATES 2020/2021

Term	Begin	Half term		End	No. of School Days
		Begin	End		
Autumn 2020	Tuesday 1 Sept 2020	Monday 26 Oct 2020	Friday 30 Oct 2020	Friday 18 Dec 2020	74
Spring 2021	Monday 4 Jan 2021	Monday 15 Feb 2021	Friday 19 Feb 2021	Friday 26 Mar 2021	55
Summer 2021	Monday 12 April 2021	Monday 31 May 2021	Friday 4 Jun 2021	*Tuesday 20 July 2021	66
				TOTAL	195



All schools will be closed on **Monday 3 May 2021** for the May Day Bank Holiday.

Significant dates:

Easter Good Friday 2 April 2021
Easter Monday 5 April 2021

May Bank Holidays Monday 3 May 2021
Monday 31 May 2021

INSET days for the forthcoming academic year. Please mark these dates on your calendars as school will be closed on these dates:

Friday 23rd October 2020

Friday 12th February 2021

Friday 26th March 2021

****Friday 28th May 2021**

Monday 19th July 2021

Tuesday 20th July 2021



****This additional inset day, announced by the Welsh Government, to take place in the summer term to prepare for the new curriculum, may alter after negotiation with Stanwell and other Penarth primary schools.**

School Times under normal operations

School times have been revised currently due to COVID restrictions

Nursery

9.00am to 11.30am
1.00pm to 3.30pm

Foundation Phase

9.00am to 12.00pm
1.00pm to 3.25pm

Key Stage 2

9.00am to 12.30pm
1.30pm to 3.30pm

The main school doors (Reception – Y6) open at 8.50am.

The children may enter the building, hang their coats and bags up and go straight to their classes from this time.

Learning time starts at 9.00am.

The children should be in their classes ready to learn by this time.



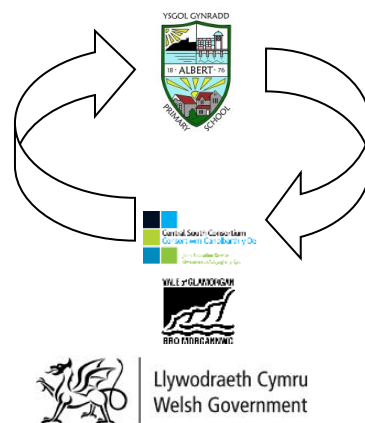
Staff / Governor Training



We have a high level of expertise within the staff and governors and we are committed to continued professional development .

The governors of the school are committed to providing opportunities for teaching and support staff to access high quality continuing professional development (CPD) in order to continue to raise the standards of teaching, learning and care of the pupils at the school.

Members of staff and governors have attended courses throughout the year, dealing with a wide variety of subjects to enhance the delivery of the curriculum and their responsibilities within the school in line with the School Improvement Plan. They are also involved in regular in-school sessions.



School Council : Pupil Voice

The 2019-2020 School Council had a disrupted year due to the school Covid closures.

However during the year they held regular meetings discussing suggestions and ideas from class surveys.

School council representatives are annually invited to an Autumn Governing Body Meeting to meet the Governors and to have a shared dialogue on how we can all work together to improve our school even more. The School Council invite all members of the Governing Body to then attend a tour of their school during lesson time.

S.O.A.P. [PTA]



The Governing Body would like to take this opportunity to thank the PTA [SOAP] for its hard work over the past year. Successful fundraising boosted funds throughout the year. The money will be used for the benefit of your children.

Email: albertrdsoap@gmail.com

Web: albertrdsoap.wixsite.com/soap

Facebook: [facebook.com/SupportersofAlbert](https://www.facebook.com/SupportersofAlbert)

Chair - Laura Evans (Parent to child in Year 5)

Secretary - Elspeth Harding (Parent to child in Year 4)

Treasurer - Christina Fernando (Parent to children in Reception and Year 5)

Vice Chair - Faezeh Mirzaei (Parent to child in Year 5)

Vice Secretary - Mike Hole (Parent to child in Year 5)

Vice Treasurer - Lisa Jones (Parent to child in Year 1)

Staff Representative - Mrs G Haldenby

In the school year September 2019 - August 2020 S.O.A.P have helped fund:

Purchases over £100 :

£416.67 - Annual Subscription to Technquest

£2,219.88 - Lego Education Sets from the Big Learning Company

£368.97 - A new iPad and stand for the school

£377.46 - Resources and a new laptop for the Nurture Room

£349.95 - Benches for Reception garden

£124.58 - Display Boards for school

£1,425.00 - Coaches to take Year 3 to swimming lessons every day for three weeks

£487.96 spent on class and teacher budgets (£200 pledged per class for essentials but far less has been spent in this academic year due to the pandemic)

Totaling : £6,258.43

If you want to make a direct difference to your child's education and make financial choices, then please join SOAP – '*many hands make light work*'



Financial Management Reporting 2019/20

Vale of Glamorgan Council School Outturn Report 2019/20 Revenue Summary

Cost Centre:101004	Description:Albert Primary	Period Name:2019/P 12	Budget Name:VOG 19/20 RE
	Level3	Annual Budget	Total Actual
CONT. TO FUNDS	CONT TO GENERAL RESERVE	0.00	0.00
		0.00	0.00
CUSTOMER RECEIPTS	CHARGE FOR SERVICE	0.00	-5,421.25
	DONATIONS	-8,045.00	-8,419.35
	RENTAL INCOME	-6,000.00	-9,491.63
	SALE OF PRODUCTS	0.00	-62,686.11
	SECONDMENT INCOME	-18,980.00	-19,279.25
		-33,025.00	-105,297.59
EMPLOYEES	GRANT EMPLOYEES	205,703.00	209,828.13
	INDIRECT EMPLOYEES EXPS	0.00	0.00
	NON TEACHING EMPLOYEES	181,554.00	181,710.03
	OTHER DIRECT EMPLOYEES	0.00	0.00
	SEG WEG EIG EMPLOYEES	0.00	0.00
	TEACHING EMPLOYEES	1,028,568.00	1,038,722.01
		1,415,825.00	1,430,260.17
GOVERNMENT GRANT	OTHER GOVERNMENT GRANTS	-918.00	-1,337.37
	WG GRANTS	-226,786.00	-255,038.85
		-227,704.00	-256,376.22
INTERNAL RECHARGES EXPEND	INTERNAL RECHARGES EXPEND	88,999.00	162,437.69
		88,999.00	162,437.69
INTERNAL RECHARGES INCOME	INTERNAL RECHARGES INCOME	-38,864.00	-37,123.80
		-38,864.00	-37,123.80
INTRA DEPARTMENTAL RECHARGE	SEG WEG EIG INCOME	0.00	0.00
		0.00	0.00
OTHER GRANTS	INCOME FROM OTHER LAs/HAs	0.00	0.00
		0.00	0.00
PREMISES	CLEANING AND DOMESTIC SUPPLIES	30,800.00	29,192.52
	ENERGY	21,000.00	22,199.67
	GROUND MAINTENANCE	500.00	216.94
	RATES	15,912.00	15,912.00
	RENTS	0.00	0.00
	REPAIRS & MAINT OF BUILDING	21,926.00	9,018.74
	WATER SERVICES	5,406.00	4,463.81
		95,544.00	81,003.68
SUPPLIES AND SERVICES	CATERING	204.00	0.00
	COMMS AND COMPUTING	11,598.00	11,842.99
	EQUIP, FURNITURE & MATERIALS	51,930.00	36,762.53
	EXPENSES	100.00	0.00
	GRANTS & SUBSCRIPTIONS	831.00	2,837.37
	MISC EXPENSES	15,102.00	5,265.91
	PRINTING STATIONERY & OFFICE EXPS	22,800.00	25,436.86
	SEG WEG EIG SUPPLIES AND SERVICES	0.00	0.00
	SERVICES	1,228.00	977.88
		103,793.00	83,123.54
TRANSPORT	CAR ALLOWANCES	500.00	320.40
	PUBLIC TRANSPORT	0.00	0.00
	SEG WEG EIG TRAVEL EXPENSES	0.00	0.00
		500.00	320.40
		1,405,068.00	1,358,347.87

Cost Centre:910009	Description:Albert	Period Year:2019
--------------------	--------------------	------------------

Balance Type	b/f Balance 1st April '19	In Year Movement 2019/20	c/f Balance 31st March '20
Schools Employees and misc balances	97269.4	-50549.27	46,720.13
Schools Balances-Total Held	0	0	0.00
Total Balance	97269.4	-50549.27	46,720.13



'Helping us to help ourselves learn'

While children are at Albert Primary School, we do all that we can to meet their needs and provide a happy, safe learning environment. We place great importance on the close partnership between home and school.

We recognise that it is by working together that we strive to ensure our children become happy, confident and successful individuals, making a positive contribution to the world in which we live.

A Gilbert (Headteacher)



We're on the Web :
www.albertprimary.co.uk



@albertprimary

YSGOL GYNRADD

