



'Helping us to help ourselves learn'

Please familiarise yourself with the new systems on the following pages.

**** KS2 Children – if you wish for your child to walk home on your own at the end of the school day, please contact their class teacher informing them of this intention. ****

To enter the school please use the lower yard (basketball yard) entrance.

The gate will be open from 8:45 – 9:00.

If you arrive after this time you will need to contact the main office for admission.

On entering the school, please use the hand sanitising station as picture.



Following the one-way system (please see yellow arrows) which will guide you to the correct entrance.





'Helping us to help ourselves learn'

If your child is in Y4, Y5 or Y6 please use this entrance in the lower basketball yard.



If your child is in Y1 or Y2 please use this entrance in the main yard.





'Helping us to help ourselves learn'

If your child is in Reception or Y3, please continue your way around the school to the top yard and use this entrance in the top yard.



Once you have dropped off your child/ children, please continue to follow the arrows and exit the school via the top yard (near Reception).





'Helping us to help ourselves learn'

If you need to speak to a member of the Administrative team,
please wait on these lines and phone the school on 02920 707682.



Please do not access the school via the top yard entrance.





'Helping us to help ourselves learn'

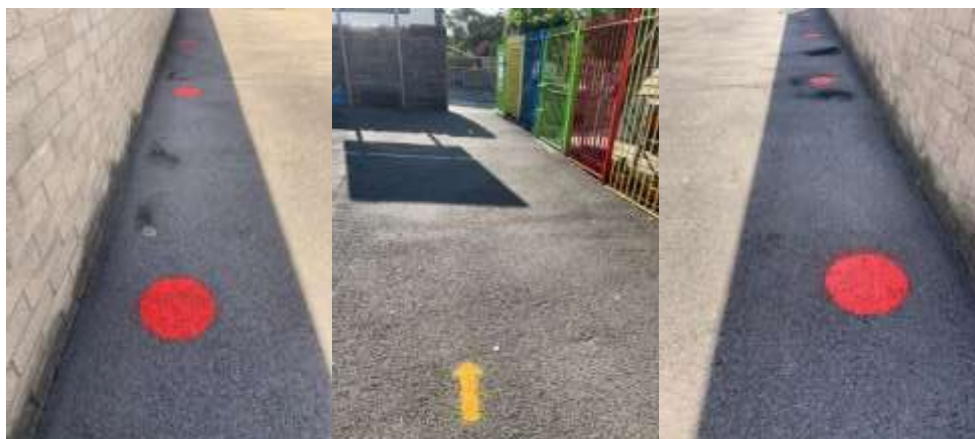
Once in school, there are arrows (one-way system) to help guide children safely around the school.



When you collecting your child / children, please adhere to social distancing measures. This will be done via the red pick up spots on the different yards.

- ✓ **Y4 / Y5 & Y6 children can be picked up from the basketball yard.**
- ✓ **Y1 & Y2 children can be collected from the main yard (spots near the timber trail).**
- ✓ **Reception & Y3 children can be collected from the top yard (red spots against the far wall).**
- ✓ **Nursery children can be dropped off and collected at the Nursery Entrance.**

Teachers will dismiss individual children from the school exit doors at these locations. Please then follow the one-way system to exit the school via the top entrance.



If you are uncertain about anything, please ask a member of staff who will be more than happy to help.